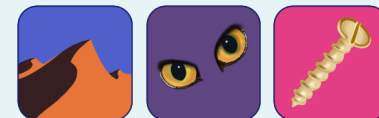




Phoneme Spotter – Long Vowel U

U_E, OO and EW spelling patterns



1. Highlight the U_E/UE, OO and EW spelling patterns in different colours.
2. Sound button the words.
3. Read the words.
4. Two 'broken' words have been hidden. Find them and write them here:

zoo	moon	boot	tube	blew	soon	chuck	tune
room	suck	you	zoo	droop	few	clue	slug
club	flew	use	struck	too	glue	tune	spoon
huge	flute	blue	food	grew	snug	shoot	spook
new	chew	smooth	cute	luck	to	new	brush
stew	statue	true	duck	argue	screw	truck	tooth